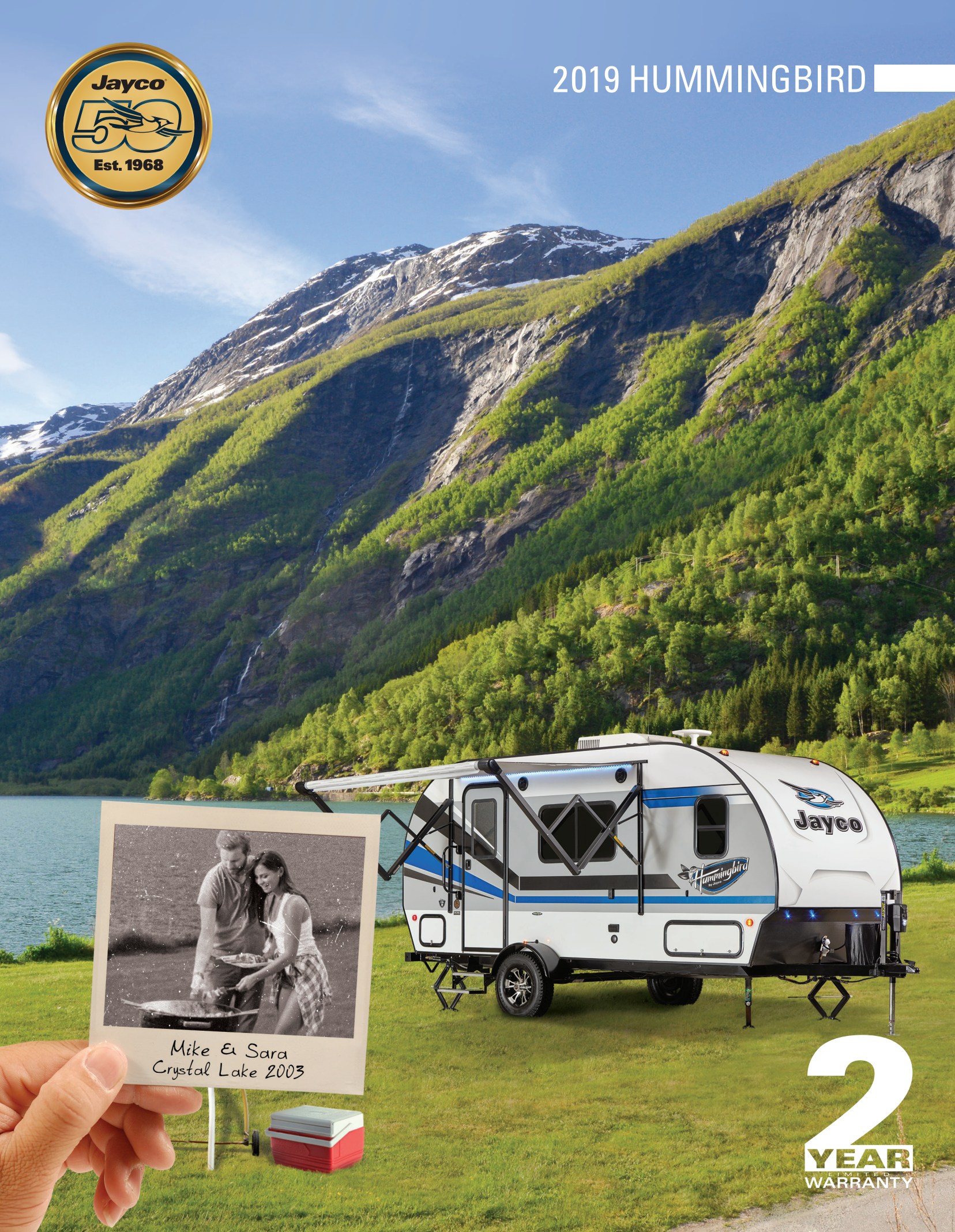




# 2019 HUMMINGBIRD



Mike & Sara  
Crystal Lake 2003



**2**  
YEAR  
LIMITED  
WARRANTY



# HUMMINGBIRD



17RB MAIN INTERIOR



17RB STORAGE



17RB POWER AWNING WITH MULTI-COLORED LED LIGHTS



17RB SEAMLESS KITCHEN COUNTERTOPS



17RB 2 BURNER RECESSED COOKTOP



ROOF & A-FRAME MOUNTED SOLAR PREP



GOODYEAR® TIRES WITH DEXTER® TORSION AXLES & SELF ADJUSTING BRAKES



A-FRAME MOUNTED 2-BIKE CARRIER (OPTIONAL)



LOW PROFILE 13,500 BTU A/C (N/A 10RK)



INSULATED & ENCLOSED UNDERBELLY WITH ADDED LAYER OF ASTRO-FOIL™



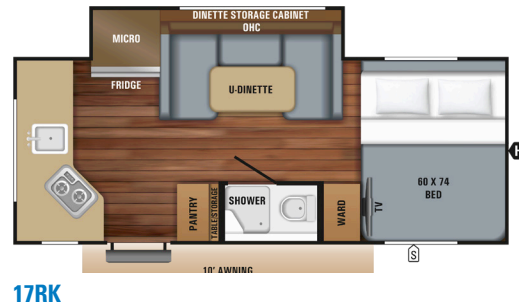
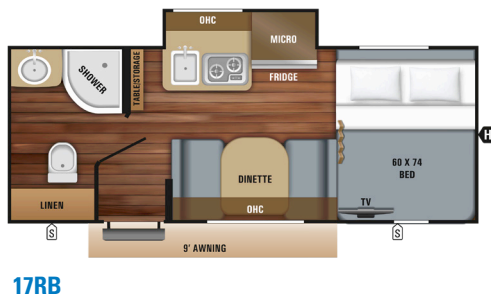
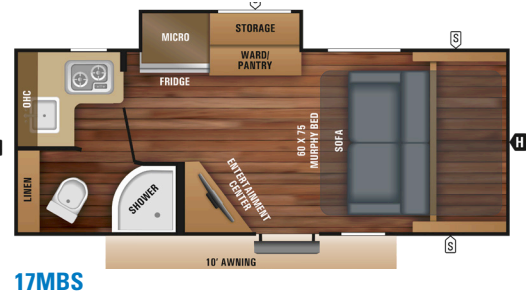
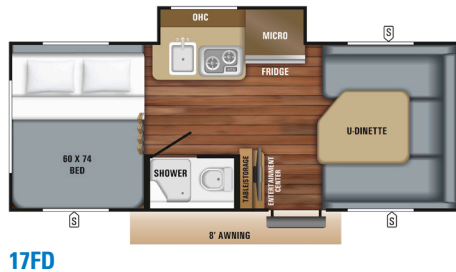
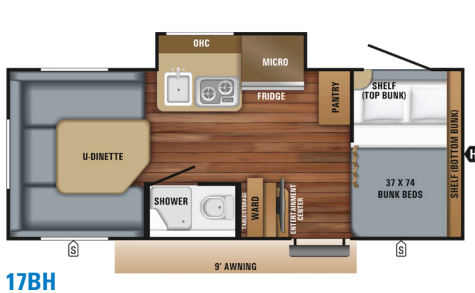
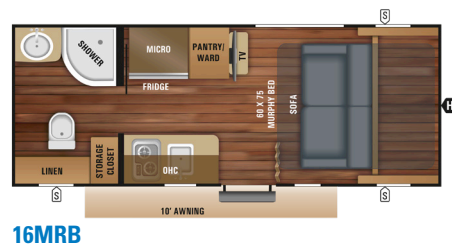
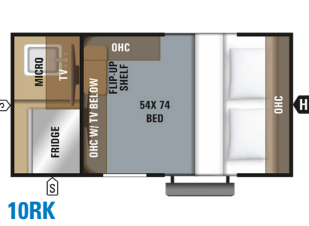
10RK EXTERIOR



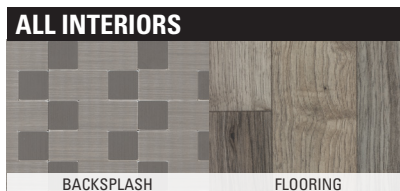
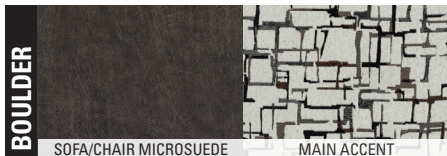
10RK INTERIOR



# HUMMINGBIRD FLOORPLANS



## INTERIOR DÉCOR



## SPECS

FLOORPLAN	EXTERIOR TRAVEL LENGTH	EXTERIOR WIDTH	EXTERIOR HEIGHT W/AC	INTERIOR HEIGHT	UNLOADED VEHICLE WEIGHT (LBS.)	DRY HITCH WEIGHT (LBS.)	GROSS VEHICLE WEIGHT RATING (LBS.)	CARGO CARRYING CAPACITY (LBS.)	FRESH WATER CAPACITY (GAL.) (INCLUDES WATER HEATER)	GREY WASTE WATER CAPACITY (GAL.)	BLACK WASTE WATER CAPACITY (GAL.)	SLEEP CAPACITY
<b>10RK</b>	13' 0"	6' 8"	7' 8"	4' 5"	1,545	180	2,000	455	25.6	N/A	N/A	2
<b>16MRB</b>	19' 10"	8' 1"	9' 1"	6' 6"	2,780	315	3,750	970	31.6	25.4	25.4	2
<b>17BH</b>	19' 10"	8' 1"	9' 2"	6' 6"	3,015	385	3,950	935	31.6	25.4	25.4	4 - 6
<b>17FD</b>	19' 9"	8' 1"	9' 1"	6' 6"	2,845	325	3,750	905	31.6	25.4	25.4	4
<b>17RB</b>	19' 9"	8' 1"	9' 1"	6' 6"	2,890	315	3,750	860	31.6	25.4	25.4	3 - 4
<b>17RK</b>	19' 10"	8' 1"	9' 2"	6' 6"	2,980	310	3,950	970	31.6	25.4	25.4	3 - 4
<b>17MBS</b>	19' 10"	8' 1"	9' 0"	6' 6"	2,990	280	3,950	960	31.6	25.4	25.4	2

**Unloaded Vehicle Weight (UVW):** Sometimes referred to as "Dry Weight," UVW means the typical weight of this trailer as built at the factory. The UVW, as used in product literature and other promotional materials, does not include cargo, fresh water, propane, options or dealer-installed accessories.

**Gross Vehicle Weight Rating (GVWR):** GVWR means the maximum permissible weight of the trailer, including the UVW plus personal items, all cargo, fluids, options and dealer-installed accessories. The GVWR is equal to or greater than the sum of the UVW and the CCC.

**Cargo Carrying Capacity (CCC):** CCC means the maximum weight of personal items, food, fresh water, propane, tools, other cargo and dealer-installed accessories that can be carried by the trailer. CCC is equal to or less than GVWR minus UVW. The addition of options will decrease the CCC.

**Hitch Weight (HW):** The hitch weight, as used in product literature and other promotional materials, does not include cargo, fresh water, propane gas, options or dealer-installed accessories. The addition of these types of items will either add to or subtract from the stated hitch weight.

It is important for your safety and enjoyment that your tow vehicle be adequately sized and equipped to tow and handle the GVWR of the RV you select. Review weights and rating of your tow vehicle and consult a competent advisor for questions or advice. Whether you are new to RVing or a veteran, get a feel for the performance of your tow vehicle before heading out on the roadways. When you tow an RV, you must drive differently than when you drive a single vehicle. Practice hooking up, driving, backing up and braking in a safe environment or seek out professional instruction. Jayco affixes a weight label to each RV which lists estimated weight information for that vehicle. See specifications chart above.

## STANDARDS AND OPTIONS

### STANDARD EXTERIOR EQUIPMENT

Aerodynamic, rounded profile with front & rear black diamond plating  
 Enhanced graphics package  
 One piece fiberglass roof  
 Stronghold VBL™ vacuum-bonded laminated floor and sidewalls  
 American-made Norco® frame with integrated A-frame  
 American-made Dexter Single axle with rubber-torsion suspension  
 G-20 tinted safety glass windows  
 Marine-grade exterior speakers (2)  
 Impact-resistant, powder coated, black aluminum fenders  
 U-channel drip rail over slideout  
 30 amp service with detachable power cord  
 20 lb. propane bottle with auto regulator with cover  
 Outside grill propane quick-connect port  
 Exterior TV bracket with cable & satellite hookups  
 Rear camera backup prep  
 26 inch wide entry doors with gas strut & frosted window  
 25.6 gallon fresh water tank  
 25.4 gallon black & gray tanks  
 Aluminum entry step(s)  
 Low profile 13,500 BTU A/C  
 A-Frame mounted Solar Prep  
 Keyed-Alike™ entry and baggage doors

### STANDARD INTERIOR EQUIPMENT

Wall to wall Armstrong® vinyl flooring  
 Folding 2' x 4' picnic table  
 Screwed, glued, mortise & tenon cabinetry

Smoked glass decorative inserts (select overhead cabinets)  
 Ball-bearing drawer glides with 75 lb. capacity  
 LED lighting throughout  
 2 burner recessed cooktop with glass cover  
 Plywood dinette, bed bases, & bunk bases  
 High density dinette cushions with vinyl backing  
 Jayco exclusive teddy bear mattress  
 2.1 amp USB port in all models  
 Decorative window treatments with pleated nightshades  
 Residential-style seamless countertops  
 110V/USB tower in all models

### CUSTOMER VALUE PACKAGE (MANDATORY, N/A 10RK)

American-made, nitro-filled Goodyear® radial tires  
 Aluminum rims  
 Self-adjusting electric brakes  
 Solar prep (roof mounted)  
 Stabilizer jacks with pads (4)  
 6 gallon gas/electric DSI water heater  
 Folding assist handle at entry door  
 Black tank flush  
 Outside shower  
 3 cu. ft. 2 way refrigerator  
 18,000 BTU furnace  
 AM/FM/CD/DVD/Bluetooth® stereo with speakers  
 Convection microwave  
 Power awning with LED light  
 Enclosed underbelly with added layer of Astro-Foil™ insulation  
 Power tongue jack

### 10RK CUSTOMER VALUE PACKAGE (MANDATORY)

15 inch Goodyear off-road mud tires  
 1.7 cu. ft. 12/120V 2 way refrigerator  
 Aluminum rims  
 Enclosed underbelly with added layer of Astro-Foil™ insulation  
 Fan-Tastic Fan power roof vent  
 Furrion® portable bluetooth speaker  
 Microwave  
 Power tongue jack  
 Self-adjusting electric brakes  
 Solar prep (roof mounted)  
 Spare tire & carrier  
 Stabilizer jacks with pads (2)  
 120V/12V 2 way 24" LED TV

### OPTIONS

Customer Value Package (MANDATORY)  
 Baja Package: 15 inch off-road mud tires, additional 5 inch of ground clearance & double entry step (N/A 10RK)  
 24 inch LED TV (N/A 10RK & 17MBS)  
 32 inch LED TV (17MBS)  
 Goodyear spare tire (N/A 10RK)  
 Goodyear spare tire (Baja Package) (STD on 10RK)  
 2-bike carrier rack (A-frame mounted)  
 Exterior grill  
 8,000 BTU side mount A/C (10RK only)  
 30 lb. propane bottle with auto regulator and cover



Scan for complete towing guide resources



TRAVEL WITH CONFIDENCE

At Jayco, we build our RVs to handle every adventure, then back them with our industry-leading 2-year limited warranty. We, with support from our select partners, have you covered for **2 camping seasons**. That's **730 days**. You won't find a better warranty in the business, because the only strings we attach are those that deliver the ultimate in reliability. That's the Jayco difference. So go explore. For a copy of our 2-year limited warranty with complete terms and conditions, please contact your local Jayco dealer.



Jayco, Inc. | P.O. Box 460 | Middlebury, IN 46540 © RVIA

See dealer for further information and prices. All information in this brochure and on www.jayco.com is the latest available at the time of publication approval. Jayco reserves the right to make changes and to discontinue models without notice or obligation. Photography may show optional equipment or props used for decoration purposes only. RVs built for sale in Canada may differ to conform to Canadian codes. JAYCO and the JAYCO BIRD IN FLIGHT are registered trademarks of Jayco, Inc. Printed in USA 60K 7/2018 ©2018 Jayco, Inc. 274874

Follow Jayco #Jayco50



Meet your Jayco Dealer \_\_\_\_\_

We work hard—so you can play hard. From finding the perfect Jayco for your family to providing flexible financing options and full-service support, we're here to help.